

The purpose of this application note is to describe the installation of the Wave Idea Bitstream 3X USB MIDI drivers for Windows Xp.
This install is not mandatory, it is just required if you want to change the generic Windows Xp USB MIDI driver name.

Requirements

This document only concerns owners of Bitstream 3X who have connected their controller to a computer featuring Windows Xp..

As mentioned in the Bitstream 3X user manual, the unit does'nt require any driver to be used with Windows Xp. Indeed the Bitstream 3X is automatically recognized and will appear as new USB MIDI devices (2 Inputs, 1 Output), listed as follow :

<u>Peripheral listed</u>	<u>Name associated by default</u>	<u>Corresponding to the Bitstream 3X</u>
USB MIDI IN 1	USB audio device	<i>USB MIDI OUT 1</i>
USB MIDI IN 2	USB audio device [2]	<i>USB MIDI OUT 2</i>
USB MIDI OUT	USB audio device	<i>USB MIDI IN</i>

The purpose of this additional driver is to replace the generic devices names "USB audio device" to a more convenient names "Wave Idea Bitstream 3X"

Installing the driver

1) The first step is to **connect the Bitstream 3X to the computer**, without any driver installed.

The unit will be detected as a new USB MIDI device and automatically attached to the generic USB MIDI devices.

These generic USB MIDI devices are the WDM windows drivers called "USB audio device".

Once the Bitstream 3X is recognized by the computer to which it is connected, the display screen will indicate the connection by the USB bitmap on the top right.

Once the Bitstream 3X is recognized, the supplementary MIDI peripherals will be listed. These correspond to the Bitstream 3X.

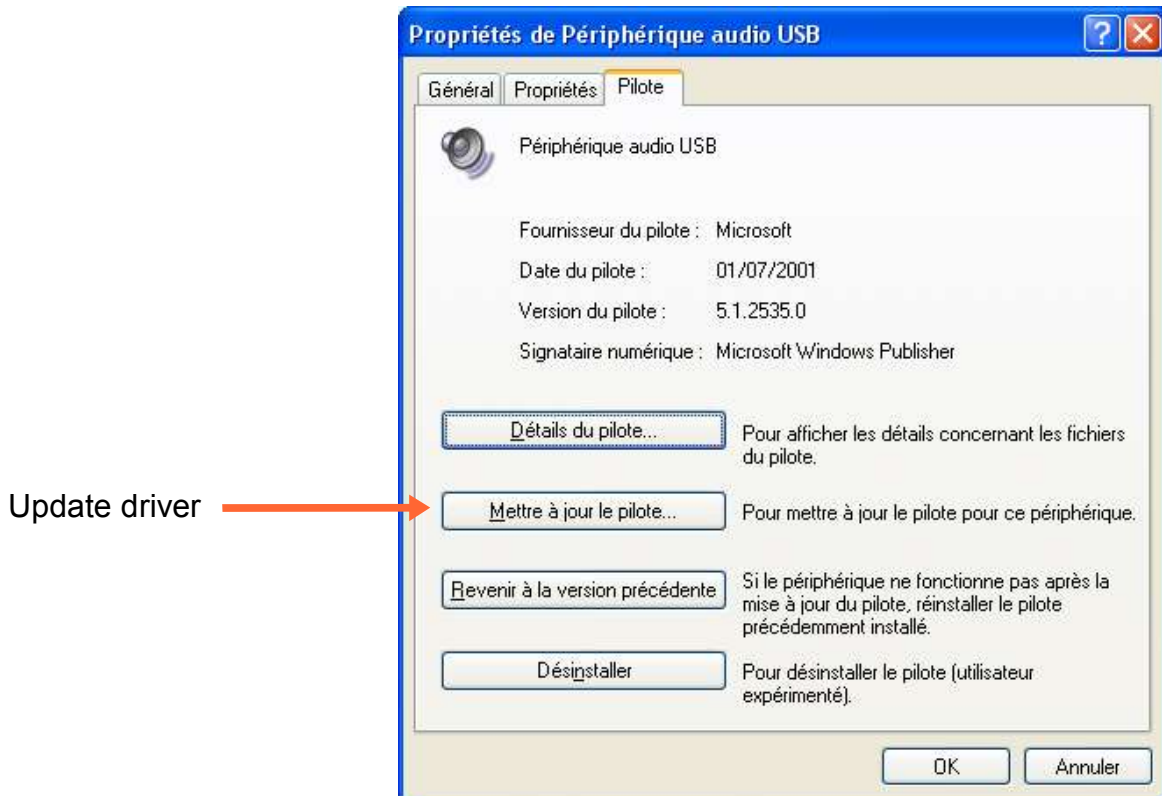
2) Open the **Windows Xp control panel**, click on **"Audio peripherals"**

3) Click on the **"hardware" tab** so you can have a look to the audio hardware peripherals present on the computer

4) Double click on the device corresponding to the Bitstream 3X, listed as "USB audio device".
Check on the information displayed that this device corresponds to the Bitstream 3X.
You can also select the "USB audio device" and click on property button.



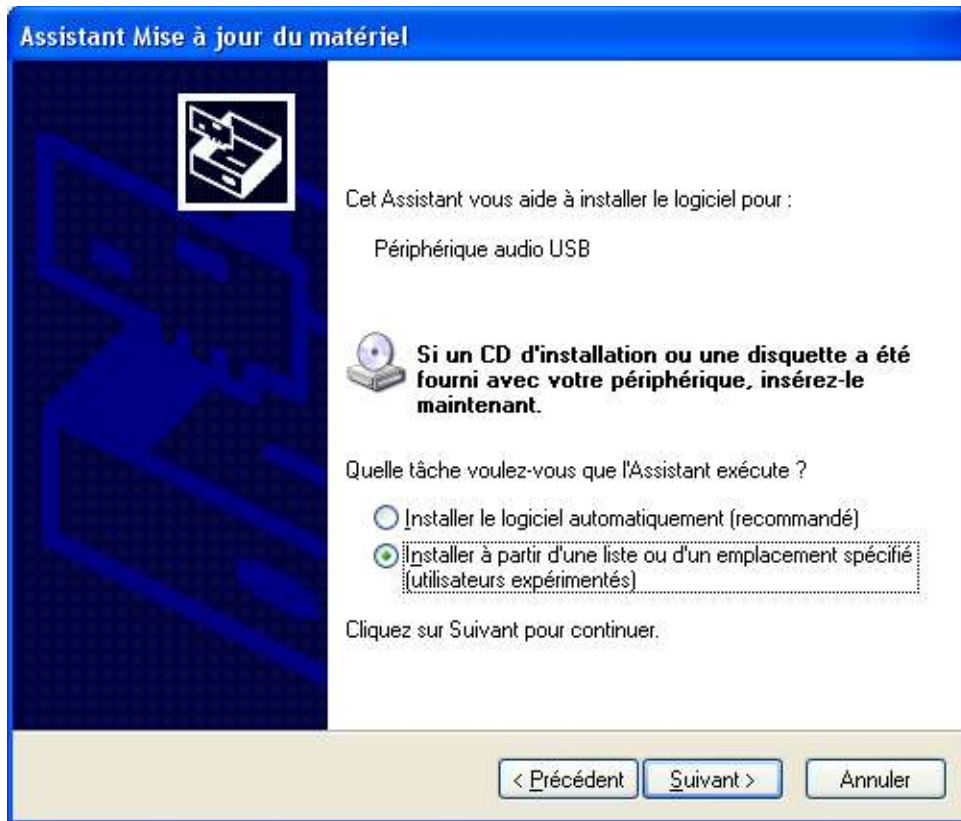
5) Once the next windows appear, click on the "driver" tab and click on "update driver" button



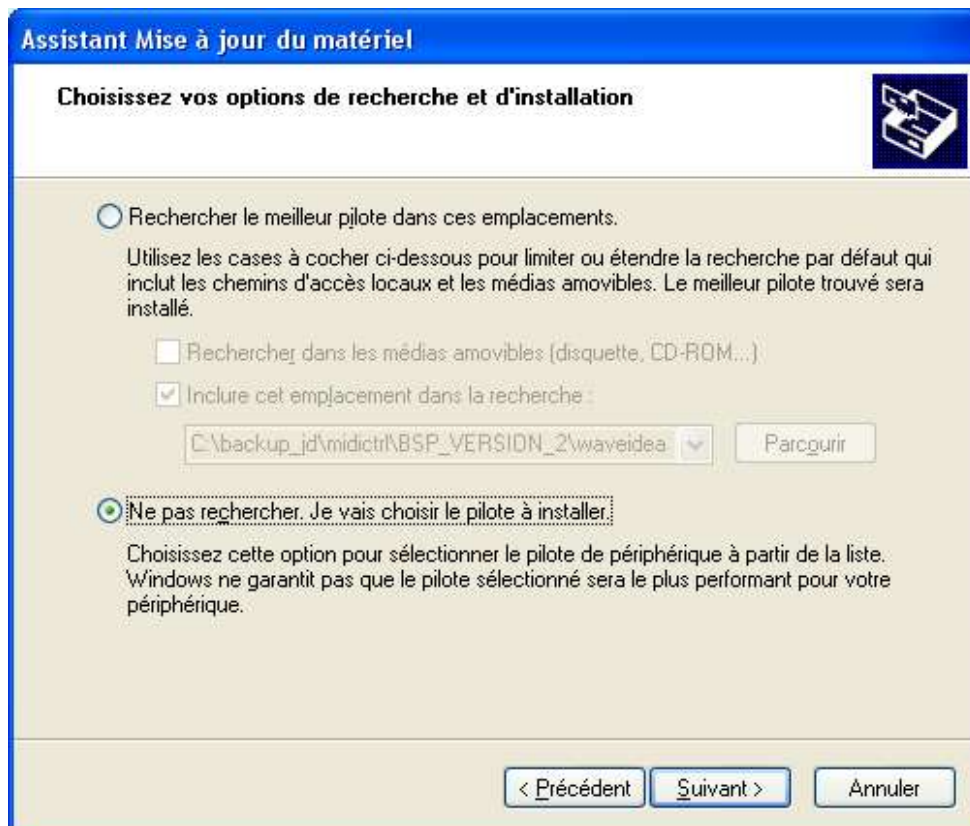
- 6) You are now prompted to select the method to update the driver
Select "ignore" when windows proposes to search the new driver on the Windows update and go to the next step



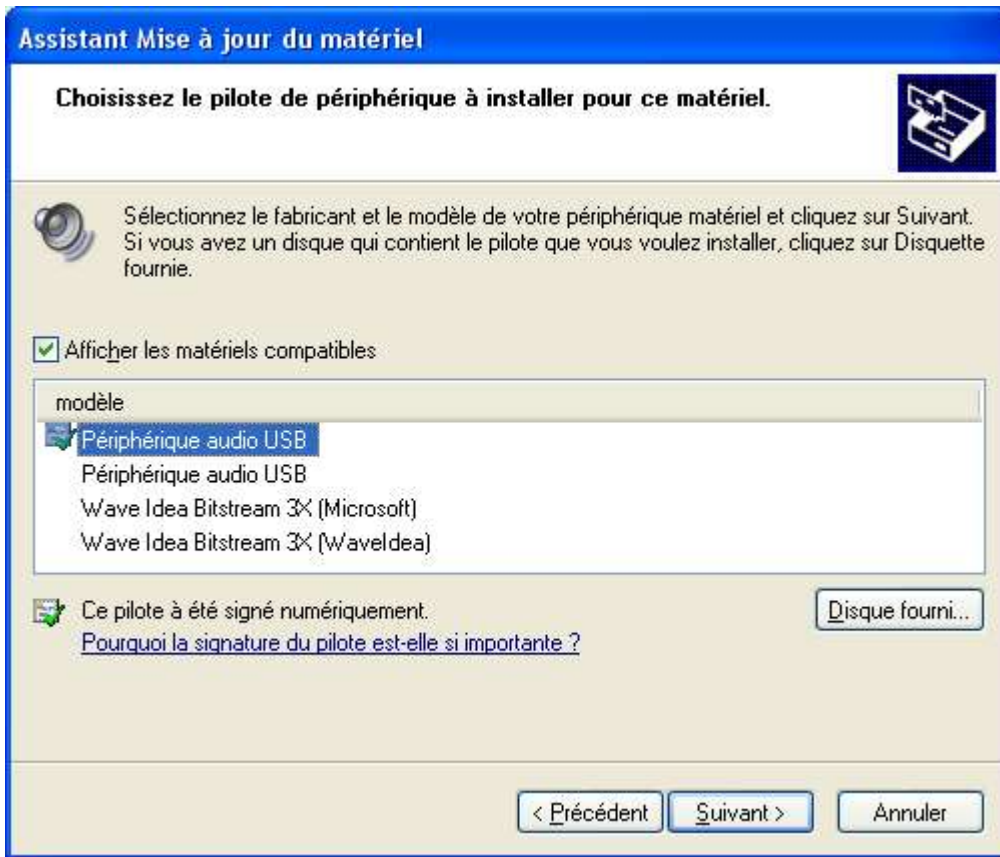
- 7) Windows now proposes to update the driver automatically or by hand, select a manual update from a know location, and click next, as follow



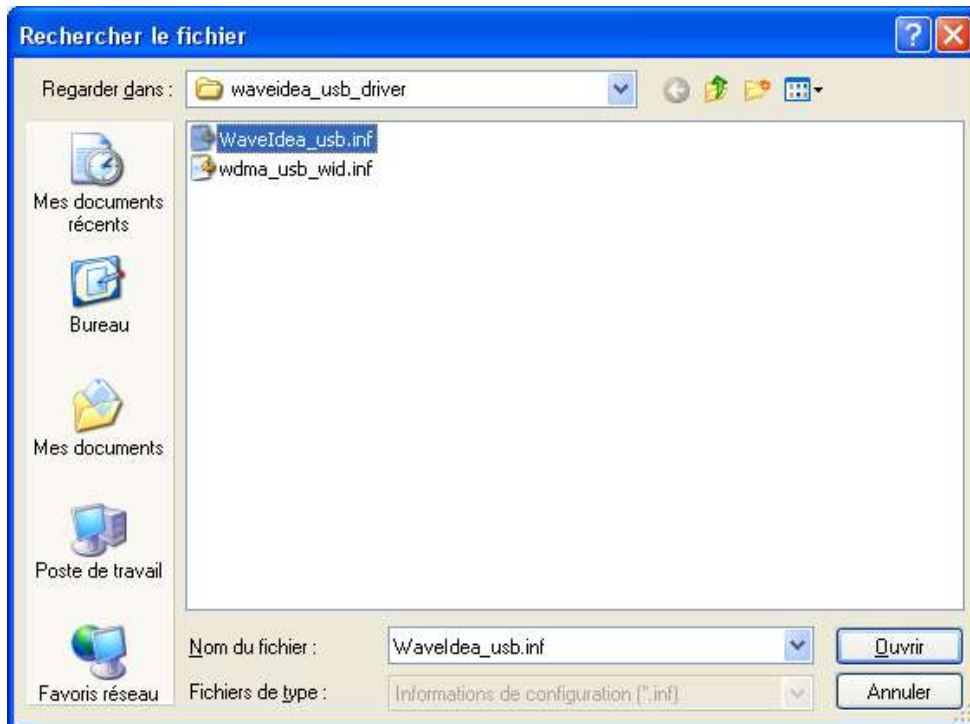
- 8) Select the method where you have to specify yourself the location of the new driver, instead of allowing Windows to decide for you.



9) Click on “have a disc” so you will be able to specify the exact location of the new driver.



10) Open the browser and select the file you extracted from the Wave Idea driver zip package, the file to select is “Waveldea_usb.inf”



11) Click "OK" once the proper file is selected, and accept the security message by clicking on "continue" button.



12) The new driver is now being installed by Windows Xp and the following screen should indicate the driver has been properly updated



13)the driver update is now finished, and the Bitstream 3X will now be listed as “Wave Idea Bitstream 3X” in all MIDI applications, instead of the generic name “USB audio device”